

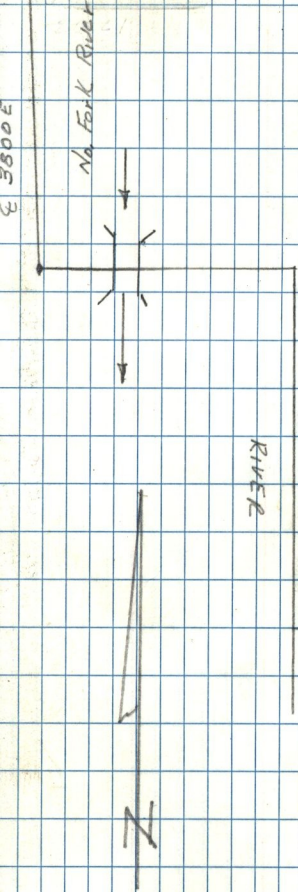
T7N; R1E
N89°52'E

N44°53'E
Vert = 89°41'
756.57

FIELD
70
 $\Delta = 111^\circ 00.8$
 $222^\circ 01.7$
RT.

10'	17	16
	20	21

$\Delta = 44^\circ 58.8$ Lt.
 $89^\circ 57.5$



504°06'E
Vert = 90°55'
2180.76

P.I
 $D = 16^\circ 07.6$ RT
DRIVE 32°15.2

507°58'E
Vert = 90°34'
2190.01

HOWARD BURTONS'

Sta. No. 54 + 61.13